

PRODUCT RECALL NOTICE

Dear customer

11.3.2024

This notice applies to the Cresto Safety products.
Cresto Group Safety has been notified by our supplier Usang that the above product poses a potential risk of disintegration during use.
Please check any products you have in your possession.

Due to a manufacturing defect, we ask you to immediately stop using any of the items listed below.
Please remove from service, quarantine, and follow instructions on page 3.

This notice applies to the CRESTO products listed below:



SIMO+ S Work Positioning Lanyard 2370

012204210	Cresto, Simo+ S, 1,5 m
012204211	Cresto, Simo+ S, 2 m
012204212	Cresto, Simo+ S, 2,5 m
012204213	Cresto, Simo+ S, 5 m
012204214	Cresto, Simo+ S, 10 m
012204215	Cresto, Simo+ S, 20 m
012204216	Cresto, Simo+ S, 30 m
012204217	Cresto, Simo+ S, 40 m
012204219	Cresto, Simo+ S, 15 m
012204220	Cresto, Simo+ S, 50 m

SIMO+ H-A WORK POSITIONING LANYARD 2371

012204230	CRESTO, SIMO+ H-A, 1,5 M
012204231	CRESTO, SIMO+ H-A, 2 M
012204233	CRESTO, SIMO+ H-A, 5 M
012204234	CRESTO, SIMO+ H-A, 10 M
012204235	CRESTO, SIMO+ H-A, 20 M
012204237	CRESTO, SIMO+ H-A, 40 M

KIT

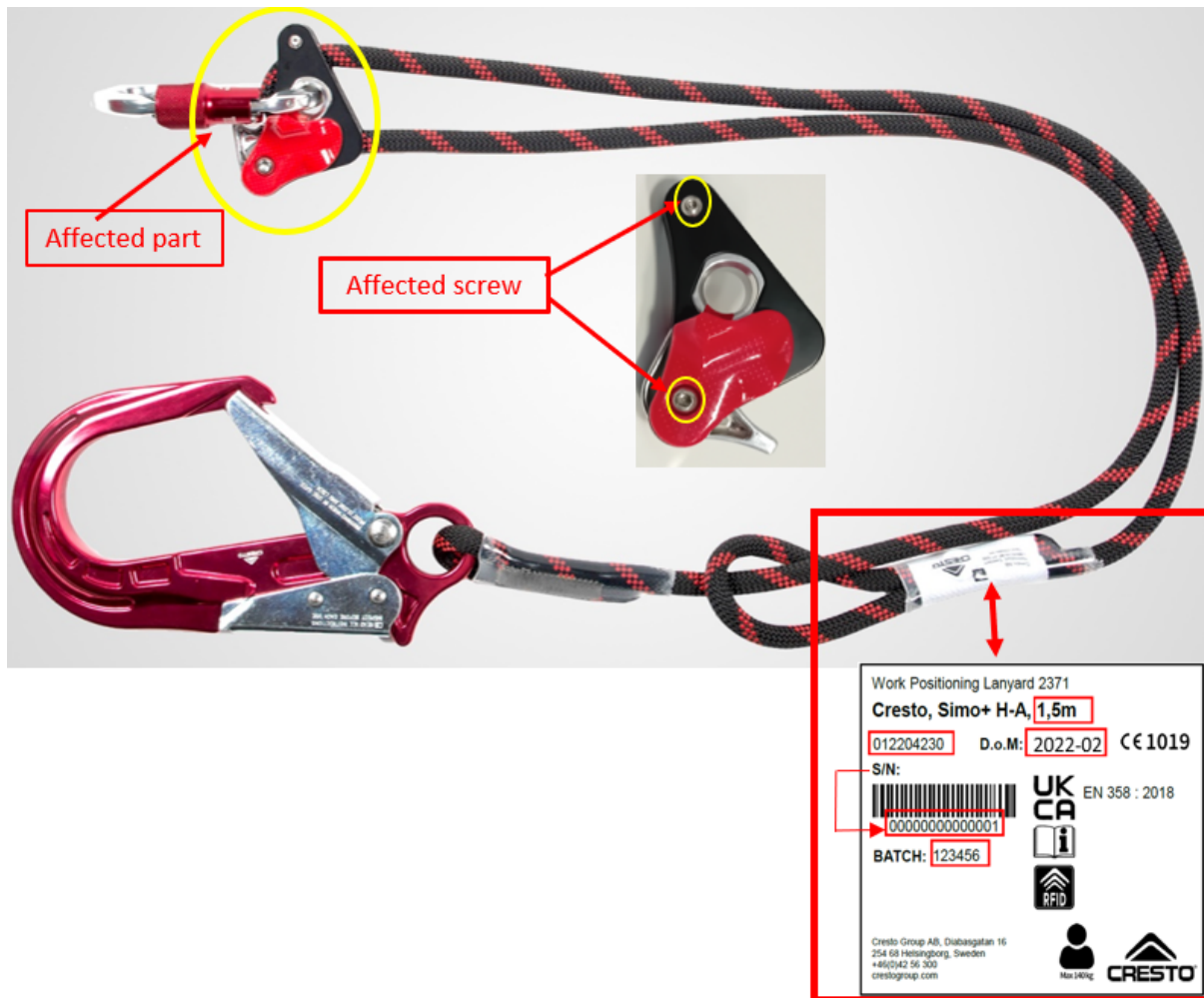
012220036	CRESTO, Worker Roofer Pro, one size
-----------	-------------------------------------

AFFECTED SERIAL NUMBERS IN APPENDIX 1

Issue Description:

It has come to our attention that, due to an oversight by our supplier, there is a significant likelihood that the rope grab screws in this batch of rope grabs marked (21P1+22P1) may be missing thread lock, a crucial component for securing the screws. This defect could potentially compromise the safety and functionality of the rope grab, presenting a high risk to users.

NOTE: THERE HAVE BEEN NO ACCIDENTS OR INJURIES RELATED TO THIS PRODUCT RECALL NOTICE.



Rectification Plan:

- Reworking: All the rope grabs are going to be reworked with new thread lock from supplier. Technical specs of thread lock **Appendix 3**. See reworking plan in **Appendix 2**.

Documentation:

- Documentation: Every reworked product will be meticulously documented in Inspector, with updates made to each affected serial number to ensure full traceability and accountability.

Follow instructions below.**Step 1**

Identify the item.

Step 2

Check serial number of the final product(appendix 1). And remove from service if it's affected.

Step 3

Re-check batch number on the rope grab (21P1 and 22P1).

Step 4

Contact your Cresto partner/supplier, for planning return of the item.

Step 5

Cresto or Cresto partner will rework the rope grab.

Step 6

Cresto or Cresto partner will register the rework in Inspector.

Step 7

Cresto or Cresto partner will return the product to the sender.



appendix 1

Following serial number is affected:

SIMO+ S Work Positioning Lanyard 2370

In. No.	Batch number	Serial number	DOM	Article name I	Article name II
012204210	2302765	24012302765001 - 24012302765022	1.24	SIMO+ WP - SNAP, WORK POSITIONING LANYARD 2370, 1,5M	Cresto, Simo+ S, 1,5 m
	2302432	23112302432001 - 23112302432010	11.23	SIMO+ WP - SNAP, WORK POSITIONING LANYARD 2370, 1,5M	Cresto, Simo+ S, 1,5 m
	2302319	23112302319001 - 23112302319020	11.23	SIMO+ WP - SNAP, WORK POSITIONING LANYARD 2370, 1,5M	Cresto, Simo+ S, 1,5 m
	2302037	23092302037001 - 23092302037005	9.23	SIMO+ WP - SNAP, WORK POSITIONING LANYARD 2370, 1,5M	Cresto, Simo+ S, 1,5 m
	2210188	22102210188001 - 22102210188060	10.22	SIMO+ WP - SNAP, WORK POSITIONING LANYARD 2370, 1,5M	Cresto, Simo+ S, 1,5 m
	2210176	22102210176001 - 22102210176060	10.22	SIMO+ WP - SNAP, WORK POSITIONING LANYARD 2370, 1,5M	Cresto, Simo+ S, 1,5 m
	2210108	22072210108001 - 22072210108060	7.22	SIMO+ WP - SNAP, WORK POSITIONING LANYARD 2370, 1,5M	Cresto, Simo+ S, 1,5 m
	2210084	22062210084001 - 22062210084040	6.22	SIMO+ WP - SNAP, WORK POSITIONING LANYARD 2370, 1,5M	Cresto, Simo+ S, 1,5 m
012204211	2400209	24022400209001 - 24022400209120	2.24	SIMO+ WP - SNAP, WORK POSITIONING LANYARD 2370, 2M	Cresto, Simo+ S, 2 m
	2400198	24022400198001 - 24022400198048	2.24	SIMO+ WP - SNAP, WORK POSITIONING LANYARD 2370, 2M	Cresto, Simo+ S, 2 m
	2302375	23112302375001 - 23112302375120	11.23	SIMO+ WP - SNAP, WORK POSITIONING LANYARD 2370, 2M	Cresto, Simo+ S, 2 m
	2302257	23112302257001 - 23112302257120	10.23	SIMO+ WP - SNAP, WORK POSITIONING LANYARD 2370, 2M	Cresto, Simo+ S, 2 m
	2302214	23102302214001 - 23102302214120	10.23	SIMO+ WP - SNAP, WORK POSITIONING LANYARD 2370, 2M	Cresto, Simo+ S, 2 m
	2302179	23102302179001 - 23102302179060	10.23	SIMO+ WP - SNAP, WORK POSITIONING LANYARD 2370, 2M	Cresto, Simo+ S, 2 m
	2301736	23092301736001 - 23092301736120	9.23	SIMO+ WP - SNAP, WORK POSITIONING LANYARD 2370, 2M	Cresto, Simo+ S, 2 m
	2301342	23062301342001 - 23062301342120	6.23	SIMO+ WP - SNAP, WORK POSITIONING LANYARD 2370, 2M	Cresto, Simo+ S, 2 m
	2301048	23042301048001 - 23042301048120	4.23	SIMO+ WP - SNAP, WORK POSITIONING LANYARD 2370, 2M	Cresto, Simo+ S, 2 m
	2300677	23042300677001 - 23042300677120	4.23	SIMO+ WP - SNAP, WORK POSITIONING LANYARD 2370, 2M	Cresto, Simo+ S, 2 m
	2300565	23032300565001 - 23032300565060	3.23	SIMO+ WP - SNAP, WORK POSITIONING LANYARD 2370, 2M	Cresto, Simo+ S, 2 m
	2300235	23012300235001 - 23012300235120	1.23	SIMO+ WP - SNAP, WORK POSITIONING LANYARD 2370, 2M	Cresto, Simo+ S, 2 m
	2300110	23012300110001 - 23012300110120	1.23	SIMO+ WP - SNAP, WORK POSITIONING LANYARD 2370, 2M	Cresto, Simo+ S, 2 m
	2200128	22122200128001 - 22122200128106	12.22	SIMO+ WP - SNAP, WORK POSITIONING LANYARD 2370, 2M	Cresto, Simo+ S, 2 m
	2200127	22122200127001 - 22122200127039	12.22	SIMO+ WP - SNAP, WORK POSITIONING LANYARD 2370, 2M	Cresto, Simo+ S, 2 m
	2210226	22112210226001 - 22112210226060	11.22	SIMO+ WP - SNAP, WORK POSITIONING LANYARD 2370, 2M	Cresto, Simo+ S, 2 m
	2210185	22102210185001 - 22102210185060	10.22	SIMO+ WP - SNAP, WORK POSITIONING LANYARD 2370, 2M	Cresto, Simo+ S, 2 m
	2210175	22102210175001 - 22102210175060	10.22	SIMO+ WP - SNAP, WORK POSITIONING LANYARD 2370, 2M	Cresto, Simo+ S, 2 m
	2210168	22092210168001 - 22092210168060	9.22	SIMO+ WP - SNAP, WORK POSITIONING LANYARD 2370, 2M	Cresto, Simo+ S, 2 m
	2210103	22072210103001 - 22072210103100	7.22	SIMO+ WP - SNAP, WORK POSITIONING LANYARD 2370, 2M	Cresto, Simo+ S, 2 m
	2210075	22062210075001 - 22062210075100	6.22	SIMO+ WP - SNAP, WORK POSITIONING LANYARD 2370, 2M	Cresto, Simo+ S, 2 m
	2210074	22062210074001 - 22062210074100	6.22	SIMO+ WP - SNAP, WORK POSITIONING LANYARD 2370, 2M	Cresto, Simo+ S, 2 m
012204212	2301734	23082301734001 - 23082301734040	8.23	SIMO+ WP - SNAP, WORK POSITIONING LANYARD 2370, 2,5M	Cresto, Simo+ S, 2,5 m
	2300845	23062300845001 - 23062300845012	6.23	SIMO+ WP - SNAP, WORK POSITIONING LANYARD 2370, 2,5M	Cresto, Simo+ S, 2,5 m
	2300216	23012300216001 - 23012300216022	1.23	SIMO+ WP - SNAP, WORK POSITIONING LANYARD 2370, 2,5M	Cresto, Simo+ S, 2,5 m
	2200134	23012200134001 - 23012200134012	1.23	SIMO+ WP - SNAP, WORK POSITIONING LANYARD 2370, 2,5M	Cresto, Simo+ S, 2,5 m
	2210207	22112210207001 - 22112210207015	11.22	SIMO+ WP - SNAP, WORK POSITIONING LANYARD 2370, 2,5M	Cresto, Simo+ S, 2,5 m
	2210162	22092210162001 - 22092210162010	9.22	SIMO+ WP - SNAP, WORK POSITIONING LANYARD 2370, 2,5M	Cresto, Simo+ S, 2,5 m
	2210080	22062210080001 - 22062210080010	6.22	SIMO+ WP - SNAP, WORK POSITIONING LANYARD 2370, 2,5M	Cresto, Simo+ S, 2,5 m
	2210079	22062210079001 - 22062210079020	6.22	SIMO+ WP - SNAP, WORK POSITIONING LANYARD 2370, 2,5M	Cresto, Simo+ S, 2,5 m
012204213	2400197	24022400197001 - 24022400197010	1.24	SIMO+ WP - SNAP, WORK POSITIONING LANYARD 2370, 5M	Cresto, Simo+ S, 5 m
	2302399	23112302399001 - 23112302399010	11.23	SIMO+ WP - SNAP, WORK POSITIONING LANYARD 2370, 5M	Cresto, Simo+ S, 5 m
	2302012	23092302012001 - 23092302012010	9.23	SIMO+ WP - SNAP, WORK POSITIONING LANYARD 2370, 5M	Cresto, Simo+ S, 5 m
	2300844	23042300844001 - 23042300844020	4.23	SIMO+ WP - SNAP, WORK POSITIONING LANYARD 2370, 5M	Cresto, Simo+ S, 5 m
	2300531	23032300531001 - 23032300531010	3.23	SIMO+ WP - SNAP, WORK POSITIONING LANYARD 2370, 5M	Cresto, Simo+ S, 5 m
	2300407	23022300407001 - 23022300407010	2.23	SIMO+ WP - SNAP, WORK POSITIONING LANYARD 2370, 5M	Cresto, Simo+ S, 5 m
	2200133	23012200133001 - 23012200133020	1.23	SIMO+ WP - SNAP, WORK POSITIONING LANYARD 2370, 5M	Cresto, Simo+ S, 5 m
	2210081	22062210081001 - 22062210081045	6.22	SIMO+ WP - SNAP, WORK POSITIONING LANYARD 2370, 5M	Cresto, Simo+ S, 5 m
012204214	2301644	23082301644001 - 23082301644030	8.23	SIMO+ WP - SNAP, WORK POSITIONING LANYARD 2370, 10M	Cresto, Simo+ S, 10 m
	2300843	23062300843001 - 23062300843020	6.23	SIMO+ WP - SNAP, WORK POSITIONING LANYARD 2370, 10M	Cresto, Simo+ S, 10 m
	2300678	23032300678001 - 23032300678010	3.23	SIMO+ WP - SNAP, WORK POSITIONING LANYARD 2370, 10M	Cresto, Simo+ S, 10 m
	2200132	23012200132001 - 23012200132010	1.23	SIMO+ WP - SNAP, WORK POSITIONING LANYARD 2370, 10M	Cresto, Simo+ S, 10 m
	2210189	22102210189001 - 22102210189010	10.22	SIMO+ WP - SNAP, WORK POSITIONING LANYARD 2370, 10M	Cresto, Simo+ S, 10 m
	2210164	22092210164001 - 22092210164010	9.22	SIMO+ WP - SNAP, WORK POSITIONING LANYARD 2370, 10M	Cresto, Simo+ S, 10 m
	2210110	22072210110001 - 22072210110015	7.22	SIMO+ WP - SNAP, WORK POSITIONING LANYARD 2370, 10M	Cresto, Simo+ S, 10 m
012204215	2400314	24022400314001 - 24022400314005	2.24	SIMO+ WP - SNAP, WORK POSITIONING LANYARD 2370, 20M	Cresto, Simo+ S, 20 m
	2302344	23112302344001 - 23112302344005	11.23	SIMO+ WP - SNAP, WORK POSITIONING LANYARD 2370, 20M	Cresto, Simo+ S, 20 m
	2300842	23052300842001 - 23052300842010	4.23	SIMO+ WP - SNAP, WORK POSITIONING LANYARD 2370, 20M	Cresto, Simo+ S, 20 m
	2200131	23012200131001 - 23012200131020	1.23	SIMO+ WP - SNAP, WORK POSITIONING LANYARD 2370, 20M	Cresto, Simo+ S, 20 m
	2210165	22092210165001 - 22092210165010	9.22	SIMO+ WP - SNAP, WORK POSITIONING LANYARD 2370, 20M	Cresto, Simo+ S, 20 m
	2210158	22092210158001 - 22092210158010	9.22	SIMO+ WP - SNAP, WORK POSITIONING LANYARD 2370, 20M	Cresto, Simo+ S, 20 m
	2210109	22072210109001 - 22072210109015	7.22	SIMO+ WP - SNAP, WORK POSITIONING LANYARD 2370, 20M	Cresto, Simo+ S, 20 m
	2210078	22062210078001 - 22062210078015	6.22	SIMO+ WP - SNAP, WORK POSITIONING LANYARD 2370, 20M	Cresto, Simo+ S, 20 m

In. No.	Batch number	Serial number	DOM	Article name I	Article name II
012204216	2302775	24012302775001 - 24012302775010	1.24	SIMO+ WP - SNAP, WORK POSITIONING LANYARD 2370, 30M	Cresto, Simo+ S, 30 m
	2302734	24012302734001 - 24012302734005	12.23	SIMO+ WP - SNAP, WORK POSITIONING LANYARD 2370, 30M	Cresto, Simo+ S, 30 m
	2302021	23092302021001 - 23092302021010	9.23	SIMO+ WP - SNAP, WORK POSITIONING LANYARD 2370, 30M	Cresto, Simo+ S, 30 m
	2300841	23042300841001 - 23042300841020	4.23	SIMO+ WP - SNAP, WORK POSITIONING LANYARD 2370, 30M	Cresto, Simo+ S, 30 m
	2210166	22092210166001 - 22092210166005	9.22	SIMO+ WP - SNAP, WORK POSITIONING LANYARD 2370, 30M	Cresto, Simo+ S, 30 m
	2210099	22062210099001 - 22062210099002	6.22	SIMO+ WP - SNAP, WORK POSITIONING LANYARD 2370, 30M	Cresto, Simo+ S, 30 m
012204217	2400433	24032400433001 - 24032400433001	2.24	SIMO+ WP - SNAP, WORK POSITIONING LANYARD 2370, 40M	Cresto, Simo+ S, 40 m
	2300914	23042300914001 - 23042300914001	4.23	SIMO+ WP - SNAP, WORK POSITIONING LANYARD 2370, 40M	Cresto, Simo+ S, 40 m
012204219	2302345	23112302345001 - 23112302345005	11.23	SIMO+ WP - SNAP, WORK POSITIONING LANYARD 2370, 15M	Cresto, Simo+ S, 15 m
	2302068	23102302068001 - 23102302068010	9.23	SIMO+ WP - SNAP, WORK POSITIONING LANYARD 2370, 15M	Cresto, Simo+ S, 15 m
	2301915	23082301915001 - 23082301915018	8.23	SIMO+ WP - SNAP, WORK POSITIONING LANYARD 2370, 15M	Cresto, Simo+ S, 15 m
	2300840	23052300840001 - 23052300840020	5.23	SIMO+ WP - SNAP, WORK POSITIONING LANYARD 2370, 15M	Cresto, Simo+ S, 15 m
	2210225	22112210225001 - 22112210225010	11.22	SIMO+ WP - SNAP, WORK POSITIONING LANYARD 2370, 15M	Cresto, Simo+ S, 15 m
	2210199	22112210199001 - 22112210199010	11.22	SIMO+ WP - SNAP, WORK POSITIONING LANYARD 2370, 15M	Cresto, Simo+ S, 15 m
	2210159	22092210159001 - 22092210159010	9.22	SIMO+ WP - SNAP, WORK POSITIONING LANYARD 2370, 15M	Cresto, Simo+ S, 15 m
	2210088	22072210088001 - 22072210088106	7.22	SIMO+ WP - SNAP, WORK POSITIONING LANYARD 2370, 15M	Cresto, Simo+ S, 15 m
	2210087	22062210087001 - 22062210087140	6.22	SIMO+ WP - SNAP, WORK POSITIONING LANYARD 2370, 15M	Cresto, Simo+ S, 15 m
	2210083	22062210083001 - 22062210083020	6.22	SIMO+ WP - SNAP, WORK POSITIONING LANYARD 2370, 15M	Cresto, Simo+ S, 15 m
	2210082	22062210082001 - 22062210082010	6.22	SIMO+ WP - SNAP, WORK POSITIONING LANYARD 2370, 15M	Cresto, Simo+ S, 15 m

SIMO+ H-A WORK POSITIONING LANYARD 2371

In. No.	Batch number	Serial number	DOM	Article name I	Article name II
012204230	2210167	22112210167001 - 22112210167045	10.22	SIMO+ WP ANSI - SCAFF, WORK POSITIONING LANYARD 2371, 1,5M	Cresto, Simo+ H-A, 1,5 m
	2210160	22092210160001 - 22092210160040	9.22	SIMO+ WP ANSI - SCAFF, WORK POSITIONING LANYARD 2371, 1,5M	Cresto, Simo+ H-A, 1,5 m
	2210093	22062210093001 - 22062210093045	6.22	SIMO+ WP ANSI - SCAFF, WORK POSITIONING LANYARD 2371, 1,5M	Cresto, Simo+ H-A, 1,5 m
	2210076	22062210076001 - 22062210076045	6.22	SIMO+ WP ANSI - SCAFF, WORK POSITIONING LANYARD 2371, 1,5M	Cresto, Simo+ H-A, 1,5 m
012204231	2400311	24022400311001 - 24022400311015	2.24	SIMO ANSI - SCAFF, WORK POSITIONING LANYARD 2371, 2M	Cresto, Simo+ H-A, 2 m
	2302650	23122302650001 - 23122302650010	12.23	SIMO ANSI - SCAFF, WORK POSITIONING LANYARD 2371, 2M	Cresto, Simo+ H-A, 2 m
	2302213	23102302213001 - 23102302213060	10.23	SIMO ANSI - SCAFF, WORK POSITIONING LANYARD 2371, 2M	Cresto, Simo+ H-A, 2 m
	2302051	23092302051001 - 23092302051015	9.23	SIMO ANSI - SCAFF, WORK POSITIONING LANYARD 2371, 2M	Cresto, Simo+ H-A, 2 m
	2301740	23082301740001 - 23082301740030	8.23	SIMO ANSI - SCAFF, WORK POSITIONING LANYARD 2371, 2M	Cresto, Simo+ H-A, 2 m
	2301038	23042301038001 - 23042301038060	4.23	SIMO ANSI - SCAFF, WORK POSITIONING LANYARD 2371, 2M	Cresto, Simo+ H-A, 2 m
	2300645	23032300645001 - 23032300645045	3.23	SIMO ANSI - SCAFF, WORK POSITIONING LANYARD 2371, 2M	Cresto, Simo+ H-A, 2 m
	2210122	22092210122001 - 22092210122037	9.22	SIMO ANSI - SCAFF, WORK POSITIONING LANYARD 2371, 2M	Cresto, Simo+ H-A, 2 m
	2210095	22062210095001 - 22062210095045	6.22	SIMO ANSI - SCAFF, WORK POSITIONING LANYARD 2371, 2M	Cresto, Simo+ H-A, 2 m
	2210077	22062210077001 - 22062210077045	6.22	SIMO ANSI - SCAFF, WORK POSITIONING LANYARD 2371, 2M	Cresto, Simo+ H-A, 2 m
012204232	2301741	23092301741001 - 23092301741010	8.23	SIMO+ WP ANSI - SCAFF, WORK POSITIONING LANYARD 2371, 2,5M	Cresto, Simo+ H-A, 2,5 m
	2300838	23062300838001 - 23062300838005	6.23	SIMO+ WP ANSI - SCAFF, WORK POSITIONING LANYARD 2371, 2,5M	Cresto, Simo+ H-A, 2,5 m
	2300408	23022300408001 - 23022300408005	2.23	SIMO+ WP ANSI - SCAFF, WORK POSITIONING LANYARD 2371, 2,5M	Cresto, Simo+ H-A, 2,5 m
	2300298	23022300298001 - 23022300298005	2.23	SIMO+ WP ANSI - SCAFF, WORK POSITIONING LANYARD 2371, 2,5M	Cresto, Simo+ H-A, 2,5 m
	2210096	22062210096001 - 22062210096005	6.22	SIMO+ WP ANSI - SCAFF, WORK POSITIONING LANYARD 2371, 2,5M	Cresto, Simo+ H-A, 2,5 m
	2210094	22062210094001 - 22062210094005	6.22	SIMO+ WP ANSI - SCAFF, WORK POSITIONING LANYARD 2371, 2,5M	Cresto, Simo+ H-A, 2,5 m
012204233	2302456	23122302456001 - 23122302456002	12.23	SIMO+ WP ANSI - SCAFF, WORK POSITIONING LANYARD 2371, 5M	Cresto, Simo+ H-A, 5 m
	2300837	23062300837001 - 23062300837005	6.23	SIMO+ WP ANSI - SCAFF, WORK POSITIONING LANYARD 2371, 5M	Cresto, Simo+ H-A, 5 m
	2210097	22062210097001 - 22062210097020	6.22	SIMO+ WP ANSI - SCAFF, WORK POSITIONING LANYARD 2371, 5M	Cresto, Simo+ H-A, 5 m
012204234	2300836	23062300836001 - 23062300836005	6.23	SIMO+ WP ANSI - SCAFF, WORK POSITIONING LANYARD 2371, 10M	Cresto, Simo+ H-A, 10 m
	2210201	22112210201001 - 22112210201004	11.22	SIMO+ WP ANSI - SCAFF, WORK POSITIONING LANYARD 2371, 10M	Cresto, Simo+ H-A, 10 m

KIT

In. No.	Batch number	Serial number	DOM	Article name I	Article name II
12220036	2270089	22062210087001 - 22062210087140	7.22	Worker Roofer Pro set	Cresto, Worker Roofer Pro, One size
	2270100		7.22	Worker Roofer Pro set	Cresto, Worker Roofer Pro, One size
	2210087		6.22	SIMO+ WP - SNAP, WORK POSITIONING LANYARD 2370, 15M	Cresto, Simo+ S, 15 m
	2270101		8.22	Worker Roofer Pro set	Cresto, Worker Roofer Pro, One size
	2210088		22072210088001 - 22072210088106	7.22	SIMO+ WP - SNAP, WORK POSITIONING LANYARD 2370, 15M

appendix 2

Tools		SOP - Threadlocker Red Rework		Date of Release	Rev.	1
M6 & M4 Hexagon Keys				2024/3/1	Page	1/1
<p>Rework Procedures</p> <ol style="list-style-type: none"> 1. Use an M6 hexagon key to remove the big screw and make sure its surface is clean, dry, and free of grease (Fig. 1). 2. Apply the PERMATEX PX #27150 HIGH-STRENGTH THREADLOCKER RED evenly throughout the thread surface for half the length of the screw (Fig. 2 & Fig. 3). 3. Reinstall the big screw and leave for curing (Fig. 4). 4. Then use an M4 hexagon key to remove the small screw and make sure its surface is clean, dry, and free of grease (Fig. 5). 5. Apply the Threadlocker RED evenly throughout the thread surface for half the length of the screw (Fig. 6). 6. Reinstall the small screw and leave for curing (Fig. 7). 		<p>Illustrations</p>				
<p>Notices</p> <ol style="list-style-type: none"> 1. For maximum reliability, the clearance between the engaged nut and bolt should be filled with the adhesive. 2. Clean up any glue squeezed out of the joints with a rag (Fig. 8). 3. The curing time of the threadlocker usually takes about 48 hours. 4. When fully cured, the minimum loosening torque is as follows : Big Screw : 2.5 N.m Small Screw : 1.5 N.m 						

appendix 3

UNIT: N.m	Big Screw (M6)	Small Screw (M4)
Tightening Torque With Glue	3	2
Tightening Torque Without Glue	3	2
Min Loosening Torque	2.5	1.5

appendix 4



Toll Free: 87 PERMATEX
(877-376-2839)

10 Columbus Blvd., Hartford,
Connecticut 06106

6875 Parkland Boulevard, Solon
Ohio 44139

Technical Data Sheet

High Strength Threadlocker RED

INDUSTRIAL

PRODUCT DESCRIPTION

S.I.N.: 834-300

Permatex® High Strength Threadlocker RED is a **high strength** anaerobic threadlocking material, which cures between engaged threads to form a unitized assembly that helps resist leakage, shock and vibration. The product is a single component, anaerobic liquid that cures when confined in the absence of air between close fitting metal surfaces. Ideal for all 1/4inch to 3/4inch diameter nut and bolt assemblies where future disassembly is improbable. Excellent chemical resistance and temperature resistance range of -54°C to +149°C (-65°F to +300°F). Meets or exceeds the requirements of Military Specification Mil-S-46163A Type II, Grade K.

PRODUCT BENEFITS

Improved Reliability

- Eliminates vibration issues
- Seals against leakage
- Prevents rusting of threads
- Cures without cracking or shrinking

Easy Application

- No mixing
- No curing outside of joint
- No torque compensation required during assembly

TYPICAL APPLICATIONS

Prevents loosening and leakage of threaded fasteners. Particularly suitable for applications such as:

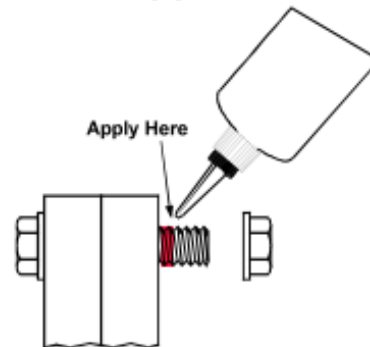
- Cylinder block
- Rocker arm studs
- Ring gear bolts
- Frame bolts
- Frame brackets
- Hydraulic press studs

DIRECTIONS FOR USE

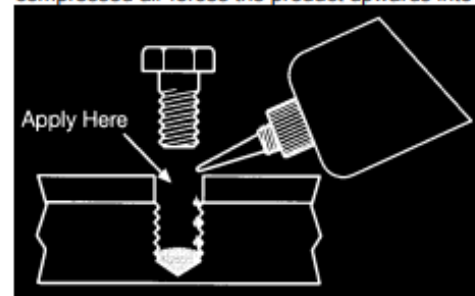
For assembly

1. Clean all threads (Bolt and Hole) with a cleaning solvent such as Permatex® Brake and Parts Cleaner and allow to dry.
2. Determine if the threads to be bonded are **Active** or **Inactive Metals** (Ref: Cure Speed vs. Substrate on the second page). If material is an **Inactive Metal**, spray all threads with Permatex® Surface Prep (24163) and allow 30 seconds to dry. Priming is not required if the material is an **Active Metal**. If unknown, it's always best to use the primer.
3. Shake the product thoroughly before use.
4. To prevent the product from clogging in the nozzle, do not allow the tip to touch metal surfaces during application.
5. **For Thru Holes**, apply several drops of product onto the

bolt at the nut engagement area.



6. **For Blind Holes**, apply several drops down female threads into the bottom of the hole. As threads are engaged, compressed air forces the product upwards into the threads.



7. Assemble and tighten as usual. When tightening to established torque values, torque compensation is not required.

For Cleanup

1. Residual liquid films and/or fillets outside the joint are readily soluble in Permatex® Brake and Parts Cleaner.
2. Cured product can be removed with a combination of soaking in Permatex® Gasket Remover and mechanical abrasion such as a wire brush.

For Disassembly

1. Apply localized heat to nut or bolt to approximately 232°C (450°F). Disassemble while hot.

For Reassembly

1. Remove loose product from nut and bolt.
2. Apply primer to all threads, regardless of metal type.
3. Assemble and tighten as usual.

NOT FOR PRODUCT SPECIFICATIONS.
THE TECHNICAL DATA CONTAINED HEREIN ARE INTENDED AS REFERENCE ONLY.
PLEASE CONTACT PERMATEX, INC., TECHNICAL SERVICE DEPARTMENT FOR ASSISTANCE AND RECOMMENDATIONS FOR YOUR SPECIFIC APPLICATION.
PERMATEX, INC., HARTFORD SQUARE NORTH, 10 COLUMBUS BOULEVARD, HARTFORD, CT 06106 PHONE - (1-877PERMATEX) 09/02

appendix 5

Contact address:

email: support@cresto.com

telephone: +421 48 414 70 74

address: Cresto Safety s.r.o
Partizánska cesta 89
974 01 Banská Bystrica
Slovakia

Please check any products you have in your possession.
Please contact Cresto Safety at support@cresto.com for further instructions.

Thank you for your attention to this matter and please do not hesitate to contact support@cresto.com if you have any queries related to this matter.

Date: 11.3.2024

Medvedová Miriam

